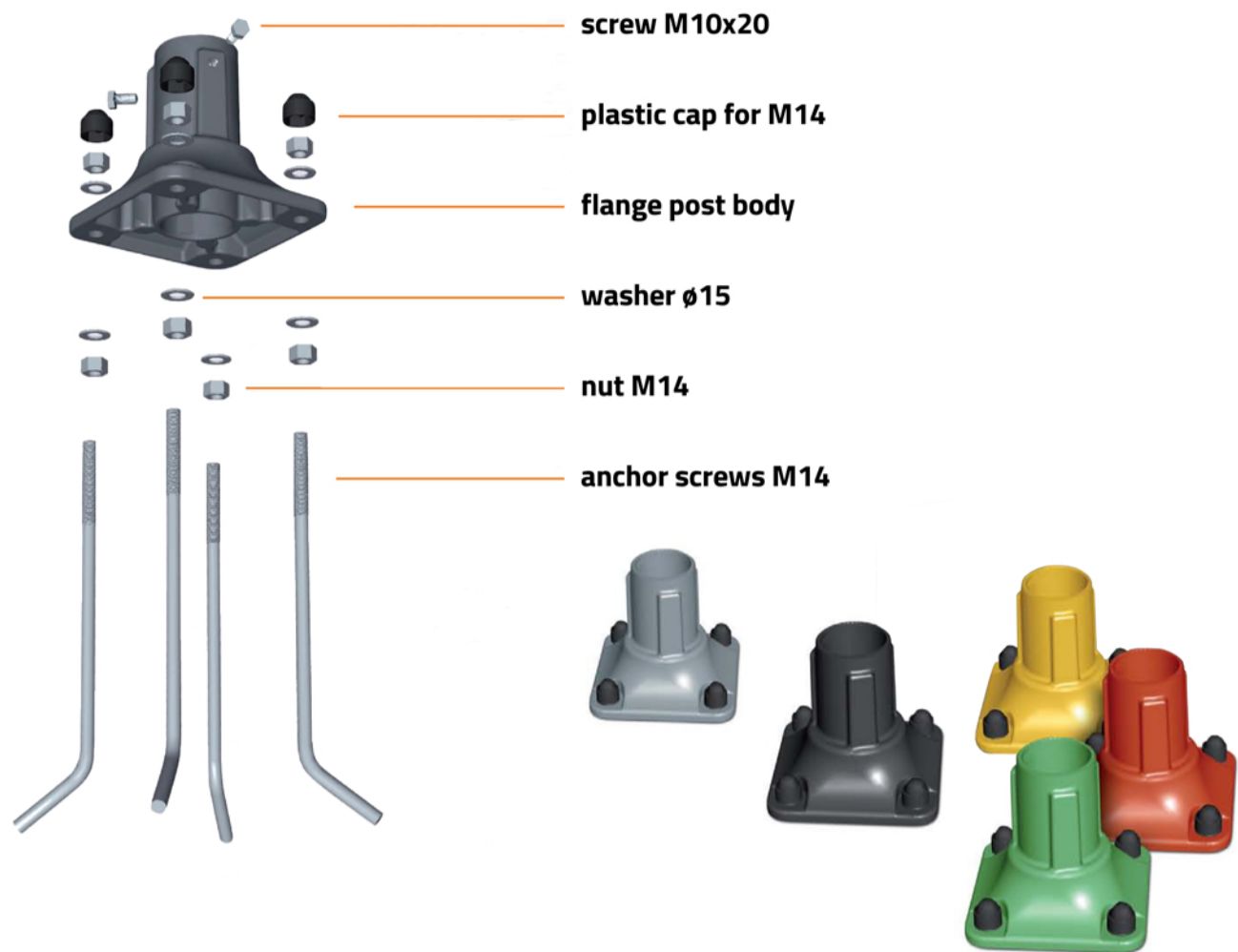




Portapalo segnaletica stradale
Road sign flange post

PRODUCT DESCRIPTION



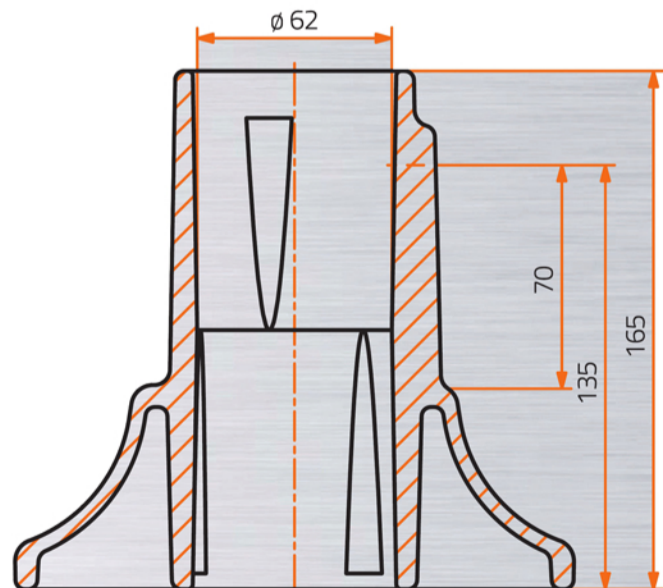
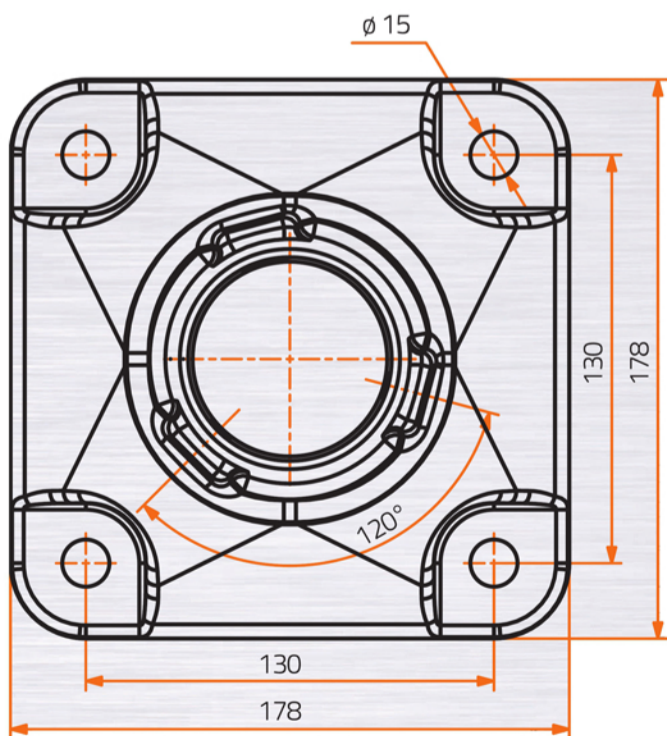
BENAHT COLORFULL CITY

presents these unique colorful aluminium flange posts to assemble with traffic or other signs. They are applicable in everyday traffic as well as they can freshen up playgrounds, athletic stadiums, parks, pedestrian zone and town squares.



PRODUCT CHARACTERISTIC

- flange posts are manufactured with a technology of pressure die casting, which guarantees long term lifespan and high resistance
- modern design
- varnished variants are in green, red, yellow or black
- flange post satisfied all technical requirements according to the European standard CSN-EN 12899-01 (Fixed, vertical road traffic signs - Part 1: Fixed signs)
- flange is adjusted for column \varnothing 60 mm
- standard spacing of the opening for anchor screws - suitable for current road signs (anchoring with four anchor screws)



DESCRIZIONI TECNICHE SPECIFICATIONS

Flange post body: aluminium alloy	Plastic cap: polyethylene	Anchor screws: M14, steel, surface finishing	Weight: 1,9 kg
Screws: M10x20 galvanized / ISO 4017	Nuts: M14 galvanized / ISO 4032		Height: 165 mm

